

PROJECT LIMELIGHT SOCIETY PRESENTS
Loosely based on the works of L. Frank Baum | Directed by Christache

THERE'S NO PLACE LIKE OZ



SUNDAY, FEBRUARY 24TH - 2 SHOWS 2:00PM 6:00PM
DJAVAD MOWAFAGHIAN CINEMA
AT SFU WOODWARD'S
GOLDCORP CENTRE FOR THE ARTS | 149 WEST HASTINGS ST. VANCOUVER B.C.

A FUN FAMILY THEATRE EVENT FEATURING YOUNG PERFORMERS FROM VANCOUVER'S EASTSIDE
Tickets 15.00 Adults 10.00 Students | www.projectlimelightsociety.org





PACIFIC
ARTISTS
M A N A G E M E N T

There's no place like...

Project Limelight

Maureen and Donald,
thank you for all you do.

PROJECT LIMELIGHT
is a rare, special thing, and we are thankful
to be able to help in our small way.

Break a leg tonight, kids!

PACIFIC
ARTISTS
M A N A G E M E N T



PrintPrint.ca

fast. easy. affordable.

1 866 PRINT56

Proud TO SUPPORT
THE FUTURE OF PERFORMING ARTS!

SPECIAL ARTIST PRICING AVAILABLE.

**ROLL UP BANNERS, POSTERS, TICKETS,
BUSINESS CARDS, FLYERS, PROGRAM GUIDES
PLUS MUCH MORE**



DIGITAL • OFFSET • LARGE FORMAT • DESIGN

81 W Pender ST Vancouver, BC V6B 1R3, Canada 604.872.8943

Thank You

to the following sponsors for providing products and services
for today's show and to Project Lighthouse Society.



(604) 871-1008 • 3604 MAIN STREET
VANCOUVER

Check us out on Facebook!



that was easy.™



shiftworkz.com
Scheduling for shift work is hard.
Shiftworkz is easy.



SFU'S VANCITY OFFICE OF COMMUNITY
ENGAGEMENT

Breakdown Services, Canada and Actors Access



Proudly support Project Limelight

PROJECT
LIMELIGHT



KATHARINE
MANSON
COMMUNICATIONS

CONGRATULATIONS

to the cast and crew
of there's no place like oz
we are so proud to partner with
project limelight society



mansoncommunications.com

GRANVILLE ISLAND
BROOM CO.

Artisan-made in B.C.



Mary and Sarah Schwiager
604 629 1141 or toll free: 1 855 519 0506
1406 Old Bridge St. Vancouver, BC V6H 3S6
info@broomcompany.com www.broomcompany.com

ANNETTE RAWLINSON
FRONT OF HOUSE

**SERVICE
EXCELLENCE**
HOSPITALITY CONSULTANTS

web: hospitalityconsultant.ca
facebook: Service Excellence
twitter: [servicex2](https://twitter.com/servicex2)
mail: annette2004@shaw.ca
phone: 604 - 782 - 0442

Neighborhoods of VANCOUVER Guide

DINING
SHOPPING
HERITAGE
ATTRACTIONS

www.neighborhoodguides.biz

TINA FINEZA
BACK OF HOUSE

**SERVICE
EXCELLENCE**
HOSPITALITY CONSULTANTS

web: hospitalityconsultant.ca
facebook: Service Excellence
twitter: [servicex2](https://twitter.com/servicex2)
mail: tinafineza@hotmail.com
phone: 604 - 551 - 7755

Congratulations
PROJECT
LIMELIGHT

from your friends @

MUSE
ARTIST MANAGEMENT

www.museartistmanagement.com

**Lucas Talent Inc. is proud to support Project Limelight.
Congratulations to the performers and volunteers!**



A LITERARY & TALENT AGENCY REPRESENTING LEADING CANADIAN
ENTERTAINMENT PROFESSIONALS SINCE 1986

www.lucastalent.com



@LucasTalentInc

Casting Workbook is proud to support Project Limelight and their efforts to enrich the lives of the children of East Vancouver. We would like to take this opportunity to congratulate all the participants involved.

 **CASTING**
WORKBOOK
www.castingworkbook.com



Project Limelight is a performing arts program, offered at no cost to young people living in and around Vancouver's Downtown Eastside.

Founded in 2011 by sisters Maureen Webb and Donalda Weaver, Project Limelight encourages children to look inside themselves, discover their inner strengths, explore their hidden talents, and form lasting friendships. Above all, Project Limelight is about providing opportunities to young people, who are inspired to perform!

A Message from Donalda & Maureen

Welcome! We're so excited to share with you this very special performance of *There's No Place Like Oz*, performed by 18 young Project Limelight participants, ages 8 to 12 years old. This production represents the final lap of a five-month journey that began with a short performance at *The Heart of The City Festival* and ends here, in front of hundreds of friends, family, and supporters.

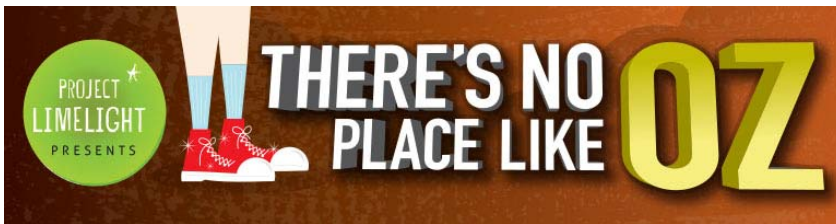
On behalf of our Board Members and everyone at Project Limelight Society we would like to extend our sincere appreciation to the following individuals, organizations and their representatives for their strong belief in community and for their generous support and enthusiasm for Project Limelight – Am Johal and the Vancity Office of Community Engagement, SFU Woodward's, Central City Foundation, Ron Suzuki and the staff at Strathcona Community Centre, Virgin Unite, Vancity, Bill and Adele Barnett, Dianne and Peter Buckland and East of Main Cafe.

Special thanks to Jodi Jacyk and her team who designed and created the beautiful costumes and Mark Pilon for designing our gorgeous poster and creating many of the visuals for the production. Thanks to all our volunteers and mentors who gave their time and shared their expertise, and to Tami Nasu and Stephanie Krzyzanowski who worked behind the scenes, to help make *There's No Place Like Oz* a huge success! Special thanks to our director, christache, who guided our young cast and brought along his enthusiasm and energy, which inspired them to believe that this was all possible. We couldn't have done it without you.

We are so incredibly proud of each of our young Limelight participants, and thrilled you have gathered with us to celebrate their success. Their journey has been incredibly rewarding, and we congratulate each and every one of them for working hard and never giving up on their dreams. Join us in cheering them on, as they enjoy their moment in the limelight!

Enjoy the show!

Donalda and Maureen



~ in loving memory of Pamela Fairfield ~

The Setting

The story takes place
on a Dusty Farm and in a Magical Land far, far away.

ACT ONE

A Dusty Farm
Land of OZ

ACT TWO

The Emerald City
Witches Castle
A Dusty Farm

*There will be one 15-minute intermission.
Concession is open before the show and during intermission.*

**You are welcome to meet the cast
after the performance.**

Poster ON SALE today

Artist Mark Atomos Pilon has signed a limited number of his beautiful "There's No Place Like OZ" posters. We are selling these autographed posters in the lobby for \$20.00 with all proceeds benefiting Project Limelight Society. After the show, at the meet and greet, our cast will be happy to add their own autographs to the poster, making them a great keepsake.



No Flash
Photography
Please.

Cellphones
OFF
Please



Our Cast



Stas ~ UNCLE HENRY

~ is 11 years old and attends Queen Alexandra. Born in Russia, he moved to Canada in 2009. He also speaks Russian. He wants to be *"the fastest man who ever lived"* and he thinks the best parts of PL are *"the acting, the lines and the jokes in the writing"*.

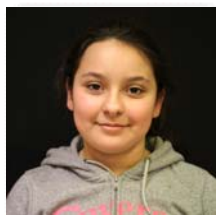
Sidney ~ OZ MAN / BOPPI / ELI

~ is 9 years old, attends Strathcona and would like to become a book editor. Sidney likes to read, act and eat! His favourite part of PL is *"learning about acting and the Rhyme King game"*.



Savanna ~ AUNTIE EM

~ is 12 years old, attends Sir John Franklin, also speaks Spanish. She plans on becoming a flight attendant. Savanna's favourite part of Project Limelight is *"putting on the play and the food"*.



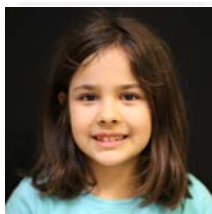
Saskia ~ BOLI / ENO / CORNELIUS CROW

~ is 8 years old, attends Strathcona, and likes to draw. She dreams of becoming a singer. Saskia likes *"the warm-ups"* at PL rehearsals, she *"learns a lot and has fun, too!"*.



Sabrina ~ TOTO

~ is 8 years old, attends Strathcona, and would like to become a veterinarian. She was born in California. Sabrina loves to play with her cat, dance, create art, and she likes *"the acting games of PL best of all. Her favourite is Laughter Yoga"*.



Ostara ~ BOGI / WICKED WITCH 3

~ is 8 years old. She is home-schooled and hopes to become a writer. Ostara loves *"everything"* about Project Limelight, especially *"interacting with the other kids"*.



Ombú ~ WICKED WITCH

~ is 8 years old and attends Strathcona. Ombú speaks French, Spanish, Italian and a bit of Hebrew. Her favourite parts of PL are *"jokes in the scripts, the learning and also the play at the end"*.



Nikita ~ DOORMAN OF OZ / SPIDERMAN ~

~ is 9 years old, attends Queen Alexandra and hopes to become an architect. He was born in Israel, speaks Russian and came to Canada in 2009. At Project Limelight he enjoys *"working on scenes and interacting with others"*.



Neena ~ BOBO / EZO / DARTH VADER

~ is 10 years old, attends Strathcona. She would like to be an actor, artist or 'Ninja'. Neena's loves *"getting to know everyone"* at Project Limelight.



Our Cast



Lily ~ DOROTHY

~ is 12 years old, attends Strathcona, and hopes to become a lawyer, or an actor. She loves to cook and camp. Her favourite part of PL is “*Everything! I can’t choose one favourite*”.

Lili ~ BONI / OZ HEAD

~ is 9 years old, attends Strathcona, and would like to be a makeup artist. She likes to play piano, read and paint. She can’t wait to do the show, it is her favourite part.



Kyla ~ GLINDA GOOD WITCH

~ is 8 years old, attends Strathcona and hopes to become a marine biologist. Besides dancing and acting, Kyla likes to go to South Africa to play with her cousins.



Jamielynne ~ BOHO / EGO / THELONIOUS CROW

~ is 9 years old, and attends Strathcona and she is interested in nursing as a career. Jamielynne likes to sing, enjoys drawing and listening to music. She also speaks Tagalog.



Hunter ~ TIN MAN

~ is 11 years old, attends Lord Tennyson. He likes acting and going to the movies. Hunter is interested in directing movies when he is older and he really likes the “*the rehearsal process*” at Project Limelight.



Emsée ~ WICKED WITCH 2

~ is 9 years old, attends Strathcona, and she would love to be a veterinarian, or actor / singer / dancer. Her favourite parts are “*the expression of feeling, the fun ... everything*”.



Delila ~ SCARECROW

~ is 12 years old, attends Strathcona, and speaks Konhani. She hopes for a career as a performer (singer, songwriter, actor, dancer, rapper) and/or a lawyer. Her favourite things to do are to “*sing with no fear*” and “*recreating beautiful memories*”.



Celestine ~ COWARDLY LION

~ is 12 years old, attends Strathcona, and hopes to be a singer, dancer, actor and rapper. Born in Tanzania, she also speaks Swahili. Celestine likes “*everything*” about PL, “*not a single thing I can think of that I didn’t like*”.



Amina ~ EBI / BIPI

~ is 9 years old, attends Strathcona, and dreams of becoming a performing artist. Her favourite parts of Project Limelight are “*rehearsing, dancing and singing*”.



Our Crew Directors



christache ~ DIRECTOR, PLAYWRIGHT ~ Multi-talented christache is an actor, writer, improviser, clown and youth educator. He loves sharing his passion for the theatre with the kids of Project Limelight who never cease to impress him, inspire him and make him laugh. He's a founding member of and performs regularly with *The Dusty Flowerpot Cabaret* and *Poupon Parade* performance troupes. He also enjoys photography, painting, graphic design, curly moustaches and macaroni and cheese.

Jaylee Hamidi ~ ASSISTANT DIRECTOR, MAKEUP & HAIR Coordinator
~ From theatre to film and TV, Jaylee has been in the fine arts her whole life. In her high school debut, she received an award for 'Best Actress' in a collaboration in which she co-wrote, directed, and produced. "From on-stage and in front of the camera, to behind the scenes and backstage, no matter what, it's always a thrill and privilege to be able to do what I'm so passionate about. It's like breathing, I wouldn't survive without it, and I get to share my love for it with an incredible group of kids."



Anna Ma ~ STAGE MANAGER ~ Anna is a graduate of Simon Fraser University. She minored in Theatre Production and Design. She is very excited to have the pleasure of working with Project Limelight and these amazing kids - they are so professional and talented! She hopes to be able to continue working with them in the future!



Metta Patterson ~ MUSICAL DIRECTOR
~ Metta is driven by the transformational power of song and voice. She is a singer/songwriter, community choir leader, vocal coach and youth empowerment facilitator. For 10 years she has worked as a theatre and music educator with diverse communities for social and environmental justice. She is inspired by the pure-hearted passion of the Project Limelight performers and has had a blast working with them! Come along to a choir: "That Sing Thing" or the "Carnegie Community Choir"!



Brandy Hewitt ~ CHOREOGRAPHER ~ Brandy is a triple-threat performer but loves her work behind the scenes with Project Limelight. Other recent 'behind the scenes' work include choreographing the short film *Blood Curtain* and developing her first full-length play *Waste*. Brandy is a graduate of both the prestigious Randolph School of the Arts and the University of Toronto. She loves watching the kids of Project Limelight grow artistically: it's what makes her job remarkable!



Jodi Jacyk ~ COSTUME DESIGN & CONSTRUCTION
~ Jodi has been working in theatre wardrobes for most of her adult life. In addition to lending her expertise to Project Limelight, she is Head of Wardrobe for the Arts Club Theatre. Her most recent projects with them include *Boeing Boeing* and this spring's *Dreamgirls* (Sheila White, costume design).



Mark Atomos Pilon ~ ILLUSTRATOR, POSTER DESIGN ~ Mark Pilon; better known as Atomos is a painter, illustrator, and designer working in Vancouver's Chinatown. He's illustrated for many magazines, and is exhibiting in museums, and galleries worldwide. Mark is happy to return to work with Project Limelight on their second show.
cycloptic.com



Our Production Crew

christache.....	Director, Playwright
Jaylee Hamidi.....	Assistant Director, Makeup & Hair (coordinator)
Maureen Webb.....	Producer
Donalda Weaver.....	Producer
Anna Ma.....	Stage Manager
Metta Patterson.....	Musical Director
Brandy Hewitt.....	Choreographer
June Fukumura.....	Assistant Stage Manager, Production Coordinator
Jodi Jacyk.....	Costume Design & Construction
Sheila White, Patrice Yapp, Irene Blazich, Aileen Twa, Alanna Freistadt.....	Costume Team
Mark Atomos Pilon.....	Illustrator / Projection Visuals, Poster Design
Lain Kim.....	Projections, SFX Designer
Jonathon Kim.....	Lighting Designer, Photographer
John Sawa.....	Sound Designer
Dan O'Shea.....	Videographer
Nataly Gudinovis, Bryan Sleeman.....	Set Construction Team
Milisa Gardy, Charlotte Zesati, Zainey Elkatib.....	Props Designers & Construction
Benedict Marsh.....	Ukulele Coach
Nicholas Lea.....	Acting Coach
Chelsea Johnson.....	Singing Coach
Lee Fraser.....	Assistant Choreographer
Aiko Takase.....	Makeup
Jessica Noujeim.....	Makeup (Oz head)
Kyla Slusar.....	Hair
Tami Nasu.....	Volunteer Coordinator, Advertising & Sponsorsh
Stephanie Krzyzanowski.....	Program Design & Layout
Kirsty Matthews, Stephanie Kelly, Leif Zapf Gillje, James Thomson.....	Video/Photo Montage
Joel Semande, Tyler Yee, Clara Chow, Alisha Lemire, Trish Li, Miyako Tsukui.....	Stage Hand



to ALL our volunteers, instructors and valued supporters who have given generously to ensure the success of Project Limelight Society, our workshops and to this exciting show, *There's No Place Like Oz*.

Janis Nicolay, BJ Harrison, Kate Harrison, Aiko Takase, Alyssa Guzzo, Roisin Faherty, Sheila O'Connor, Julian LeBlanc, Goldie Hoffman, Kim Ross, Jonathan Yee, Bill and Adele Barnett, Carmen Amos, Colleen Bolton, Darlene Donaldson, Darlyne Dolap-Reece, Ron McKinnon, Katharine Manson, Shanti Brett, Dianne and Peter Buckland, Doris Carruthers, Elena Kirschner, Deb Dillistone, Erin Aubrey, Joel Semande, Josette Jorge, Ken Lawson, Kirsten Clarkson, Lucas Nasu Nielsen, Nish Thaver, Stacey Robinson, Tyler Yee, Ajay Puri and the entire East Van Love team, Kelly Deck and The Love Umbrella Project, Sideshow Studios, Jeffrey Stefani, Jenny Patsula and the entire staff of East of Main Cafe

*"There is always one moment in childhood
when the door opens and lets the future in"*

*Congratulations and Thank you to
Project Limelight for opening these doors*



- Specializing in Zerona Laser
- Full Esthetics services
- Laser Skin Therapy and Hair Removal
- Lash extensions

Come see us in Nanaimo at
#107-6596 Applecross road,
Tel. 250 933 7000
[www.qlaserbodysculpting.com](http://www qlaserbodysculpting.com)

THE
Espana

~ condo living at its best in Vancouver's Crosstown ~

Congratulates all the young cast of Project Limelight
for their wonderful endeavour!

DAVID MITCHELL CO. LTD

1245-A GLEN DRIVE VANCOUVER, BC V6A 3M8

dm

GENERAL
CONTRACTORS

CUSTOM
MILLWORK

RICHARD EBNER
PRESIDENT

PHONE
604-251-5558

FAX
604-251-5578

CELL
604-834-3385

richard@
davidmitchellcompany.com

www.davidmitchellcompany.com

Phnom Penh

Exotic Cambodian & Vietnamese Foods

金邊小館

244 East Georgia Street
(Chinatown - off Main Street)

Vancouver, B.C.
Canada V6A 1Z7

Tel: 604-682-5777, 604-734-8898

Open 7 days a week



stormsalon

www.stormsalon.com
info@stormsalon.com
604.689.0082

77 east pender street
vancouver, bc
canada



Vancouver FOODSTER

Vancouver Foodster is an online guide that provides
“Essential Food & Drink Intelligence” to Vancouver

www.VancouverFoodster.com



A proud supporter of
PROJECT
LIMELIGHT ~
\$3 from every
Tasting Plates
Vancouver
ticket went to
support Project
Limelight kids.
“Let the show
begin!”

Vancouver 
FOODSTER
Tasting Plates Vancouver

2nd Annual
Downtown Edition
February 20, 2013 at 6:00pm



the parker

Beautifully Vegetarian

237 Union St (just off Main)
604 779 3804
www.theparkervancouver.com

CAFFÈ ★★★ BRIXTON

212 E. GEORGIA ST.
VANCOUVER
604-568-8200
WWW.CAFFEBRIXTON.COM

*Celebrating Our 30th Anniversary
est. 1981*

TREASURE GREEN

妙品馨茶莊



TEA COMPANY

227 East Georgia Street
Vancouver, BC
604.687.4181

treasuregreen.com

THE UNION

SOUTHEAST ASIAN FOOD • BEER • COCKTAILS
Mon-Thurs 5pm to 1am | Fri/Sat 5pm to 2am | Sun 5pm to 12am

219 Union Street | T: 604-568-3230

www.theunionvancouver.ca | Twitter @TheUnionVancouver

DEPARTMENT OF
W.O'W. OF
DEPARTMENT OF

locally-made
art, jewelry, garmentry
... and work by guests

www.departmentofwow.ca

110 - 243 Union St. Vancouver
604-685-9695
info@departmentofwow.ca

The PIE SHOPPE

721 GORE AVENUE
THE SMALLEST PIE SHOP IN VANCOUVER
11AM-UNTIL WE SELL OUT
THEPIESHOPPE.CA

HARVEST

COMMUNITY FOODS

- › GROCERY STORE & EATERY
- › FRESH & QUALITY FOOD PRODUCTS
- › LOCALLY-GROWN PRODUCE
- › SEASONAL MENU
- › WEEKEND BRUNCH

243 Union Street
Vancouver, BC V6A 2B2

STORE: 604.682.8851

FB: www.facebook.com/harvestcommunityfoods

TWITTER: @harvestunion

www.harvestunion.ca

HOURS
Tue-Fri: 11am-8pm
Sat-Sun: 10-6pm
Mon: Closed

CONGRATULATIONS

To the wonderful young actors!
We are so inspired by you & everyone at **Project Limelight**.



33 E 7th Ave Vancouver, BC V5T 1M4 info@shorelineactorsacademy.com www.shorelineactorsacademy.com

Project Limelight...you Rock!

Congratulations to you.... and all the young artists!

IS ACTING YOUR PASSION? IT'S OURS

shorelineactorslab

33 East 7th Ave Vancouver BC V5T1M4

ph 604-874-9979

www.shorelineactorslab.com admin@shorelineactorslab.com



Congratulations
to the Project Limelight performers!
Bravo!
Break a leg and have a great show!"



Representing actors for the Film and Television marketplace.

PLAY MANAGEMENT INC.

IS PROUD TO SPONSOR
LIMELIGHT KIDS!
HAVE FUN AND BEST OF LUCK!



www.playmgmt.com



Established in 2006, Play Management Inc is a full service talent agency and management company. With decades of combined experience, we provide representation for actors in the film, television, voice-over and commercial industries.

RED

RED Management would like to congratulate Project Limelight's participants and volunteers.

Have a great night!

RED Management || Box 3 · 415 West Esplanade, North Vancouver BC, V7M 1A6 || Tel: 604-998-8077 || Web: www.red-mgmt.com



THE CHARACTERS
TALENT AGENCY

TORONTO
VANCOUVER

The Characters Talent Agency would like to congratulate the children in Project Limelight on all their dedication and hard work.

We look forward to seeing the show!



Congratulations to the cast and crew of Project Limelight. Your star shines bright today and we applaud your passion, dedication and hard work!

East of Main Cafe is proud to support your journey. 100% of the profits from East of Main Cafe are committed to Project Limelight Society.



Bring this coupon with you to your next visit to East of Main Cafe and receive 10% off your lunch or dinner food purchase.

Open Monday to Saturday for lunch, dinner and late night tapas.

Expires March 18, 2013

East of Main Cafe | 223 East Georgia Street | 604-899-2777

www.eastofmaincafe.com info@eastofmaincafe.com [twitter@eastofmaincafe](https://twitter.com/eastofmaincafe)